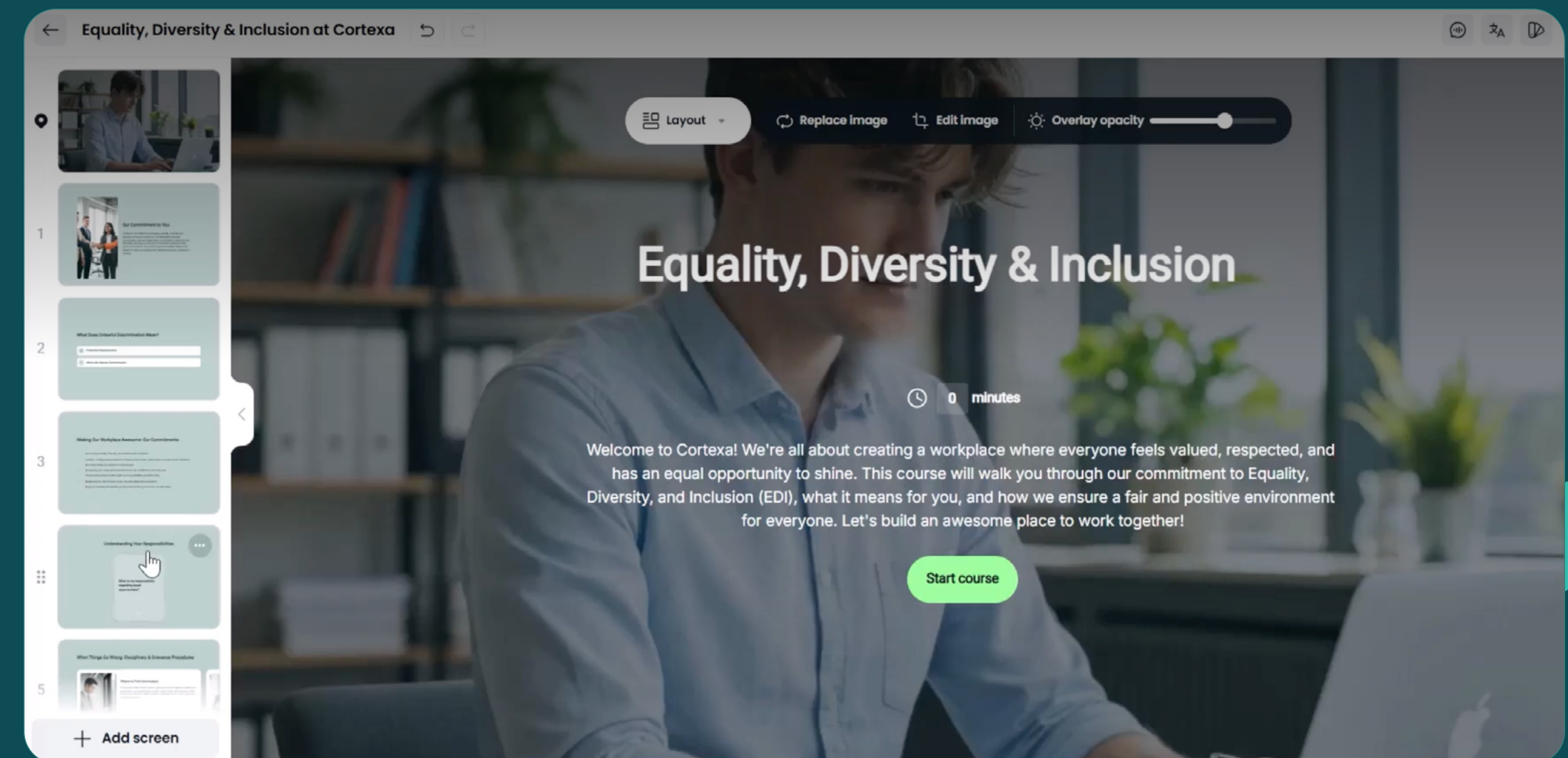




# Unlock essential knowledge with AI-powered course creation

BuildAI creates engaging learning content – directly in Totara.

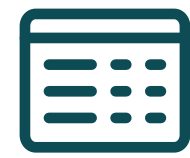
Streamline your content creation. Transform essential policies, procedures, and documents into smart learning experiences, or use prompts to create from scratch – **in minutes, not weeks.**



# Valuable knowledge shouldn't stay locked in documents

Turn essential organisational knowledge into trackable, reportable training.

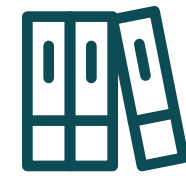
Most organisations already possess critical business knowledge, but much of it remains difficult to access, scale and track.



Procedures



Policies



Compliance documents



Operational expertise



Product knowledge



Industry papers

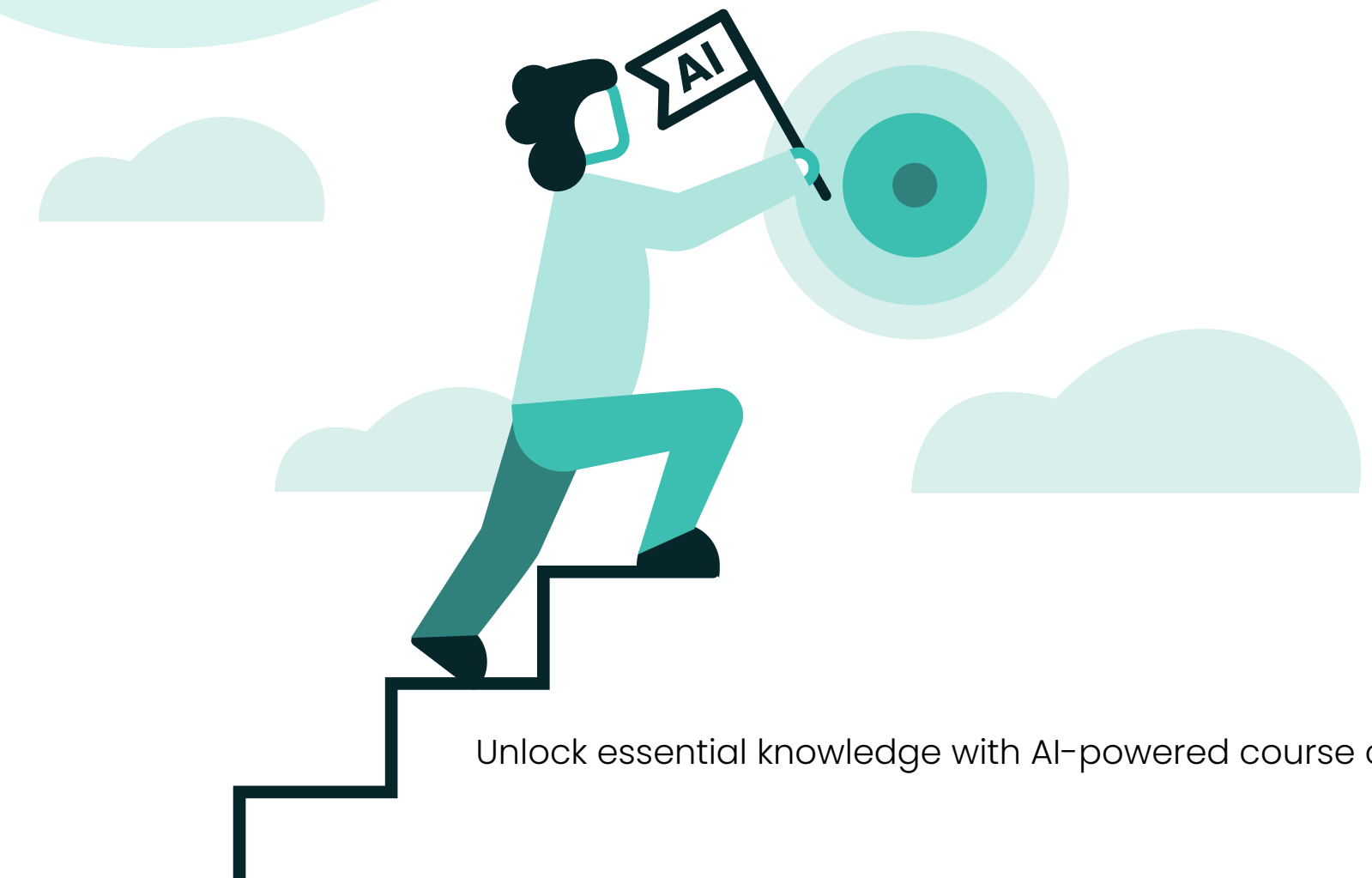
BuildAI unlocks that knowledge by converting static content into structured, engaging and outcome-focused learning – all created seamlessly in Totara.

## Empower SMEs to share their expertise

Your business is full of experts who have valuable knowledge and experience.

BuildAI's intuitive prompts and interface takes the complexity out of course creation – so everyone can contribute.

Unlock subject matter expertise, with the safety net of ensuring their content is reviewed before publishing.



1. Upload content or enter a prompt



2. AI generates interactive learning



3. Review and refine content



4. Publish directly into Totara

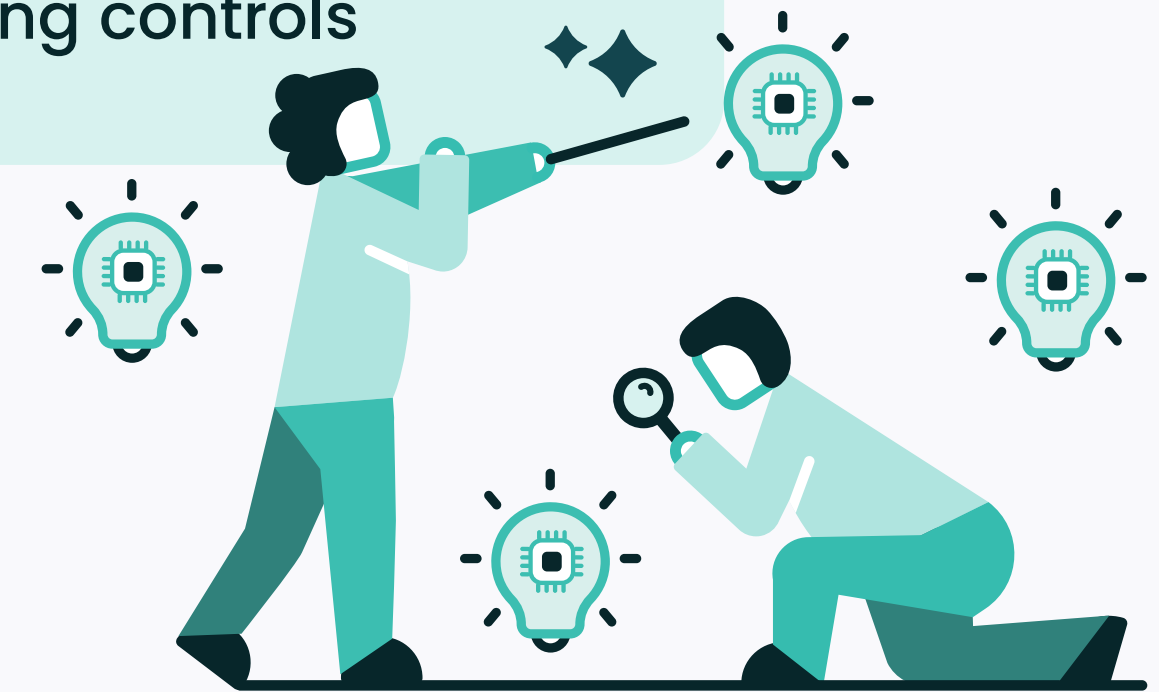


## Create faster – in minutes, not weeks

- Generate courses from documents or natural-language prompts
- Chat to BuildAI to refine your idea and create accurate materials first time
- Free up your specialist instructional designers and course authors

## Smart content

- AI-generated layouts, content and quizzes
- Built-In media resources – royalty free images & GIFs
- Narrate and translate
- Human review and editing controls



## In the flow of work

BuildAI works seamlessly in Totara:

- Publish directly into existing or new Totara courses
- Group multiple BuildAI modules into a single course
- Reuse modules across learning pathways, for easy version control



# Intuitive prompts that focus on learner outcomes

Tell BuildAI about your audience to create tailored, goal-focused learning:

- Expertise level of your audience
- Desired learner outcomes
- Set your language and tone
- Set course length
- Choose whether to include images, quizzes etc

Let's gather some information about your audience. How familiar are they with this topic?

Beginners – it's their first time learning about this subject

Intermediate – they know the basics

Advanced – they know the subject well

↶ Go back a step



## The human touch – review and refine

BuildAI supports Totara's human-centric approach to AI:

- "Take the wheel" and keep humans in the loop – review and refine before publishing
- Control access to appropriate Totara users – you're in control, with no per-seat licencing limitations
- Work with Totara's in-built approval workflows – e.g. let your SMEs create, but not publish
- Clear labelling ensures AI-created content is easily identifiable



# Branded content that scales globally

BuildAI lets you tailor course templates, language, tone, imagery, and more – so whoever creates content, it'll be on brand:

- Maintain your organisational branding and tone
- Create multilingual content (30+ languages)

## Ideal for



Employee onboarding



Compliance training



Policy and regulatory updates



Operational procedures



Product and sales enablement



Continuous professional development



Extended enterprise



Localised content for global audiences

## Get started with BuildAI today

Streamline your content creation – unlock, scale up and track your organisational knowledge

[Request a demo](#)



[totara.com](https://totara.com)